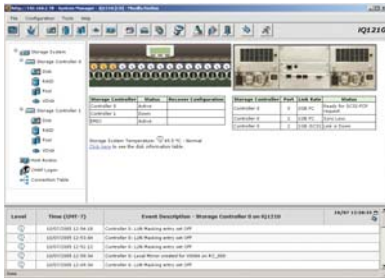


SAN Manager

### iQstor SAN Manager (SANM)

iQstor SAN Manager simplifies SAN management and troubleshooting. It automatically discovers, monitors and manages all the SAN components deployed throughout the enterprise. It also provides the user with a graphical view of the SAN topology and all the interconnects through comprehensive and automatic SAN device discovery, simplifying SAN administration and reducing management costs. The iQstor SAN manager also monitors in real-time the health and performance of all SAN attached components.



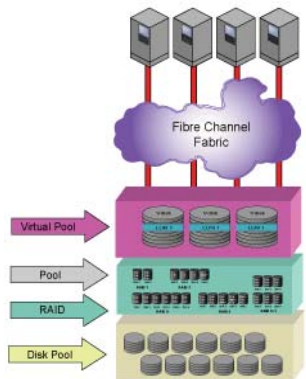
System Manager

### iQstor System Manager (SYSM)

iQstor System Manager is an embedded wizard-based configuration tool that is available as a standard feature on every iQstor storage system. With simple point-and-click operations to configure and monitor storage resources, the policy-based System Manager enables storage administrators to dynamically configure their storage system from a single management browser.

### Volume Manager based Virtualization (VMV)

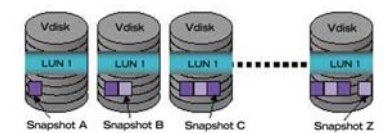
Using iQstor's VMV technology allows companies to achieve significantly improved economies of scale and operational efficiencies, while delivering superior service to their customers. VMV offers IT administrators many benefits, including the ability to easily consolidate storage resources, reduce complexity, provision storage on demand, and create multiple virtual arrays from a single system.



Volume Manager based Virtualization

### Managed Snapshot Services (MSS)

iQstor's Managed Snapshot Services (MSS) provides quick and easy virtual duplication of your critical data – at your fingertips when you need it. Using MSS, you can maximize the limited backup windows available for today's 24x7 business applications with non-disruptive snapshots that ensure data availability, require fractional space (typically 10% to 20% compared to a full copy) and enable a zero-backup window full performance backup. With MSS, businesses can easily verify functionality, reliability and accuracy of modifications to production – without impacting production data – by instantly creating writeable test databases that require little space and serve to improve accuracy of application testing. iQstor's MSS feature can also provide a solution by making the snapshot image immediately available for situations where production data has been accidentally corrupted.

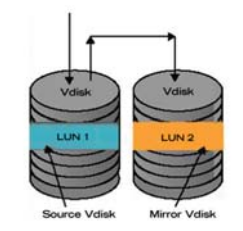


Managed Snapshot Services

MSS is especially useful for applications requiring near-instantaneous point-in-time virtual copies of the data. MSS offers users the ability to access their data from any point-in-time without having to stop their daily activities for routine tasks such as system backups.

### Volume Copy Services (VCS)

iQstor's Volume Copy Services (VCS) feature provides a comprehensive mirroring solution within the iQstor storage system. VCS creates a duplicate physical copy of a volume (vdisk) to effectively manage information growth and data protection.



Volume Copy Services

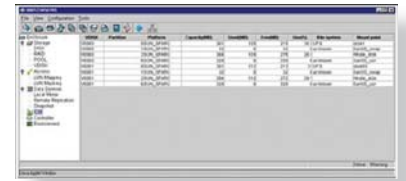
The volume copy is an independent vdisk that can be assigned to any host or application without affecting the performance of the original production volume. With VCS, companies have an excellent tool for decision support, system analysis, and application testing, bringing an exact physical duplicate of source data for single or multiple users.

To reduce costly interruptions to production volumes while making a backup, VCS can be used to split the mirror. The backup application will then use the copy volume to create the backup. Once the backup is complete, the split-mirror can be synchronized by updating the volume copy with any changes made to the original volume.

## Intelligent Capacity Management Services (ICM)

In today's data center environments, the storage system's ability to automatically expand the virtual disk space to accommodate file system growth is one of the key IT requirements for continuous data center operation. To achieve the goals of 24x7 system uptime and storage availability, iQstor's Intelligent Capacity Management Services (ICM) allows continuous monitoring of storage consumption to easily prevent the system from running out of storage space.

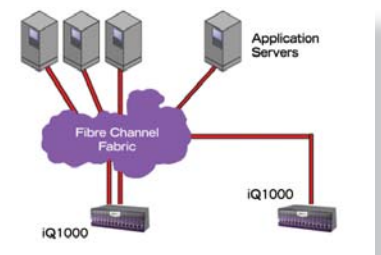
The intelligent policy-based management component of ICM allows the data center administrator to automate file system and disk partition processes, setting thresholds and policies to provision capacity from one or more storage pools without server interruption. This intelligent process eliminates costly downtime associated with traditional physical disk upgrades and with re-building and re-formatting operating system partitions that are due to unforeseen changes in storage requirements, bringing workflow efficiencies with lower TCO and higher ROI.



Intelligent Capacity Management Services

## Remote Replication - Synchronous (RRS)

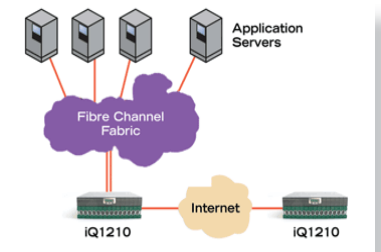
Addressing business continuity requirements for off-site files (data vaulting) where data is protected from various failures and threats, and real-time replication of critical data between multiple storage arrays (disaster recovery) are two common problems IT operations must resolve in a cost-effective manner. With iQstor's Remote Replication Services (RRS), the ultimate solution for disaster recovery, companies can restart mission-critical applications immediately after a primary site disaster, bringing critical activities back online. Using RRS, administrators have a cost-effective and flexible solution for business data synchronization between local and remote volumes that allows IT personnel to easily create an exact copy of a volume and assign that copy to an application server for immediate use – making the process of moving and using data from external sources a straightforward and efficient process.



Remote Replication - Synchronous

## Remote Replication - Asynchronous (RRA)

iQstor's RRA addresses the business continuity requirements of IT administrators, enabling them to easily replicate data to secondary sites in a cost-effective and highly efficient manner. Using RRA, companies can easily extend their storage infrastructures via iSCSI to setup secondary remote storage locations anywhere in the world, without distance limitations. Activating iQstor's RRA data services available in all iQstor Storage Systems, allows for quick and efficient transfer of data to off-site locations, whether the location is around the corner, across the country or around the globe.



Remote Replication - Asynchronous

## Database Application Agents (DAA)

By using iQstor's DAA, companies can be assured that their active databases are fully protected and transactional integrity is maintained while iQstor's MSS takes a point-in-time snapshot. The combination of DAA and MSS provides the flexibility and reliability IT administrators demand in order to ensure transactional integrity of their databases across multiple storage volumes. With iQstor's DAA, application databases such as Oracle, SQL and Exchange, can automatically be paused allowing MSS to instantly take simultaneous "group snapshots" of all active data volumes. Once the snapshots are taken, the databases resume normal operation. These snapshots then can be used to copy the data to tape without having to wait to backup the databases at "off-peak" hours.

