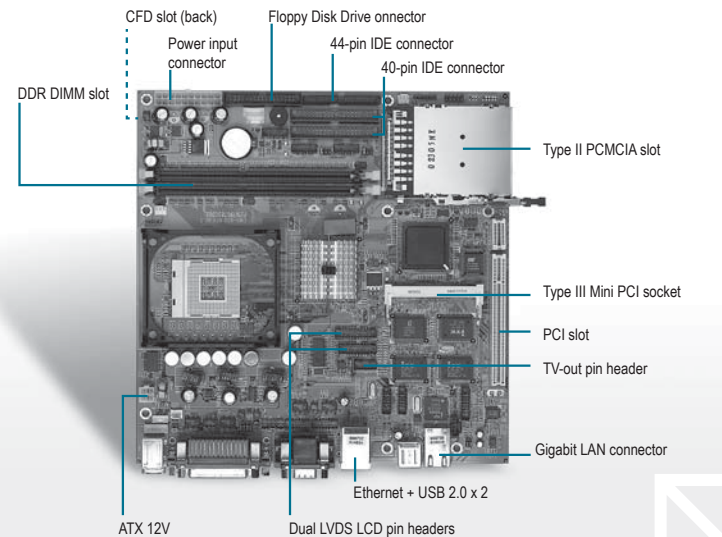


Intel® Pentium® 4 or Celeron® Processors



Specifications

System	
Processor	Socket 478-based Intel® Pentium® 4/ Intel® Celeron® processors (.13µ / .18µ) supports up to 2.8GHz with FSB 400/533MHz
System Memory	184-pin DDR SDRAM DIMM x 2, Max. 2GB (PC-200/266/333)
Chipset	Intel® 845GV + 82801DB (ICH4)
I/O Chipset	ITE IT8712F + ITE IT8874
Ethernet	Intel® 82562, 10/100Base-TX RJ-45 connector x 1 for EMB-830-A10-01 Intel® 82562 + Intel® 82540, 10/100/1000 Base-TX RJ-45 connector x 2 for EMB-830-A10
BIOS	AWARD 4MB FLASH BIOS
Watchdog Timer	Generates a time-out system reset
H/W Status Monitoring	Supports power supply voltages, fan speed and temperature monitoring
SSD	Type II CompactFlash™ slot x 1 (Shared with second IDE)
Expansion Interface	PCI slot x 1, Type II PCMCIA slot x 2, Type III Mini PCI socket x 1
Battery	Lithium battery
Power Requirement	ATX, ATX12V
Board Size	9.6"(L) x 9.6"(W) (243.8mm x 243.8mm)
Gross Weight	0.88lb (0.4kg)
Operating Temperature	32°F~ 140°F (0°C ~ 60°C)
Display	
Chipset	Intel® 845GV + Chronitel 7017
Memory	Shared system memory up to 64MB with DVMT
Resolutions	Up to 1280x1024@32bpp colors for CRT Up to 1280x1024@24bpp colors for LCD
LCD Interface	Up to 48-bit dual channel LVDS TFT LCD
TV-out	Supports NTSC and PAL standard
I/O	
MIO	EIDE x 2 (UDMA100 x 1, UDMA33 x 1), Floppy Disk Drive x 1, Keyboard+Mouse x 1, RS-232 x 5 (x3 for EMB-830-A10-01), RS-232/422/485 x 1, Parallel x 1
IrDA	One IrDA Tx/Rx header
Audio	MIC-in, Line-in, Line-out / Speaker-out. 5.1 output
USB	Two 5x2 pin headers + Type-A connectors, support up to 6 USB ports

Features

- Supports Socket 478-based Intel® Pentium® 4 / Intel® Celeron® Processors
- 48-bit Dual Channel LVDS TFT LCD
- AC-97 3D Surround 5.1 Channel Audio
- Supports Type II CompactFlash™
- Supports Type II PCMCIA, Type III Mini PCI and PCI Slots
- 6 COM / 6 USB 2.0 / TV-out Ports



Packing List

- 1701400453**
40-pin IDE Cable
- 1701440501**
44-pin IDE Cable
- 1701340601**
Floppy Disk Drive Cable
- 1701100207**
COM Port Cable
- 1700080180**
TV-out & S-terminal Cable
- 1700140164**
Audio Cable
- 1709100201**
USB Cable
- 9657666600**
Jumper Cap
- Quick Installation Guide**
- Utility CD**
- EMB-830**

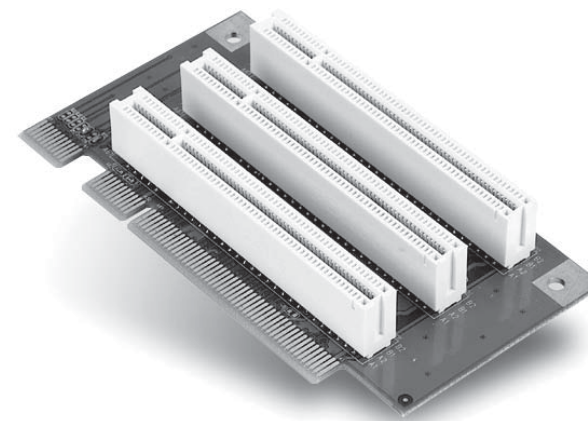
Ordering Information

- EMB-830-A10**
Embedded ATX Board, Socket 478, 533 FSB, with LCD, PCMCIA, LAN+GbE, 5.1 Audio, CF, 6 USB 2.0, 6 COM, ATX, Rev.A1.0
- EMB-830-A10-01**
Embedded ATX Board, Socket 478, 533 FSB, with LCD, LAN, 5.1 Audio, CF, 6 USB 2.0, 4 COM, ATX, Rev.A1.0

Optional Accessories

- 1759200153**
CPU Cooler Fan + Heat Sink, Socket 478, 3P, 12V, 2U Low Profile, up to P4 2.8GHz
- 1759200154**
CPU Cooler Fan + Heat Sink, Socket 478, 3P, 12V, 1U Low Profile, up to P4 2.2GHz
- 1701440182**
Slim Hard Disk Drive 44-pin ATA100 Cable
- PER-1100-A10**
Riser Card for PCI, 3-slot, EMB-830, Rev.A1.0
- PER-C10L-A10**
Mini PCI 10/100 Base-TX Ethernet Module with Realtek 8100C
- PER-C10L-A10-01**
Mini PCI 10/100/1000 Base-TX Ethernet Module with Realtek 8110S
- PER-C10L-A10-02**
Mini PCI 10/100 Base-TX Ethernet Module with Intel® 82551QM
- PER-C10L-A10-03**
Mini PCI 10/100/1000 Base-TX Ethernet Module with Intel® 82541GI
- PER-C30F-A10**
Mini PCI 3-port IEEE 1394a Module
- PER-V30C-A10**
Mini PCI Single Channel Capture Module with Philips SAA7135
- PER-C40C-A10**
Mini PCI 2-port RS-232 Module Rev. A1.0
- PER-C40C-A10-01**
Mini PCI 4-port RS-232 Module Rev. A1.0

Riser card for EMB-830



Features

- Supports Three PCI Master Slots
- Supports AD Selection

01

Compact Boards

02

SubCompact Boards

03

Embedded Motherboards

04

PC/104 CPU Modules

05

COM Express CPU Modules

06

ETX CPU Modules

07

RISC CPU Modules

08

Media PCs

09

Mini PCI Modules

10

PC/104 Peripheral Modules

11

Full-size SBC

12

Half-size SBC

13

Accessories